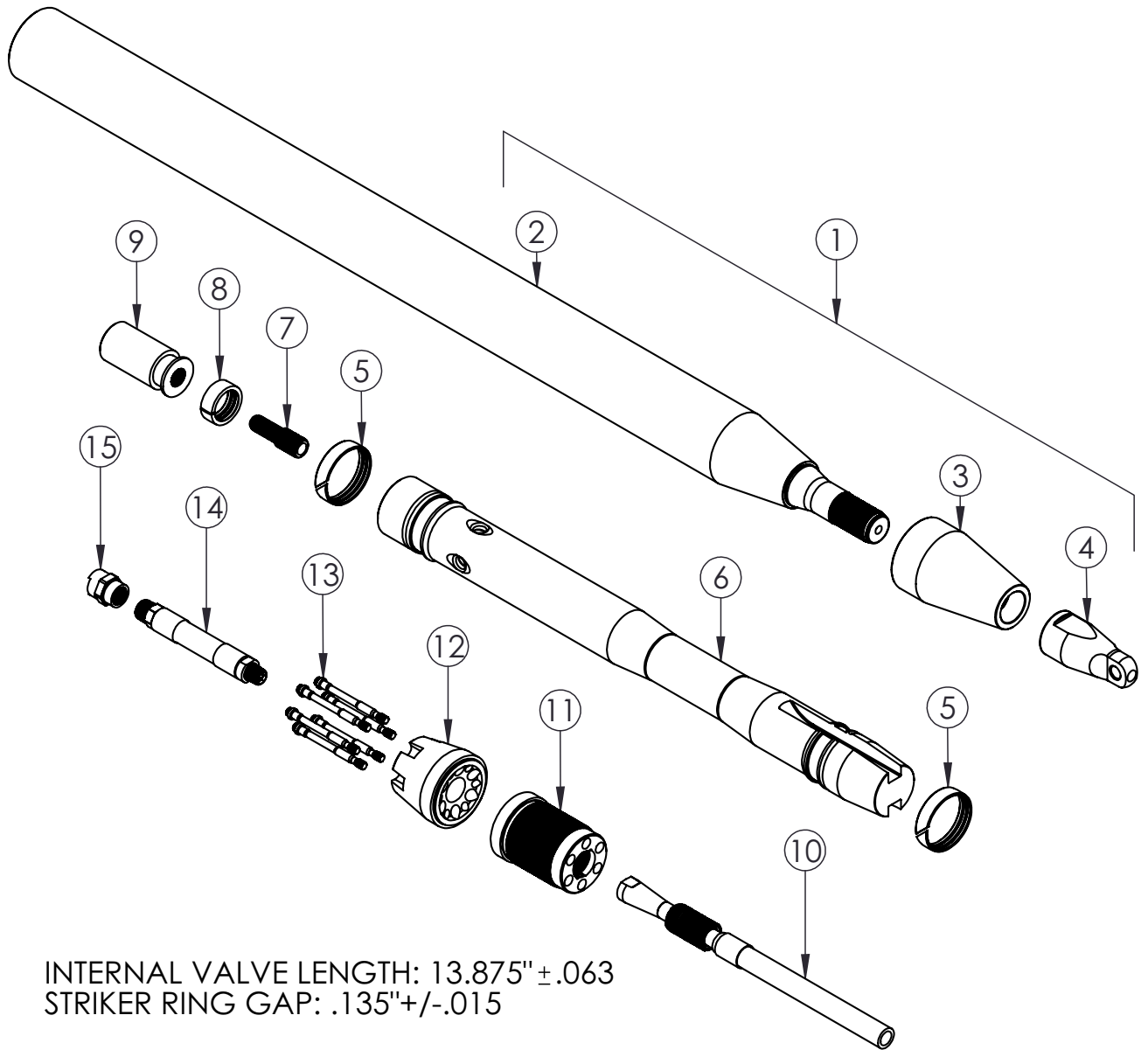


4.00" (98 mm) RH SR, PN 38222

RH – REPLACEABLE HEAD, SR – SCREW REVERSE

EXPLODED VIEW



INTERNAL VALVE LENGTH: 13.875" ±.063
STRIKER RING GAP: .135" ±.015

4.00" (98 mm) RH SR

HAMMERHEAD®

4.00" (98 mm) RH SR, PN 38222

RH – REPLACEABLE HEAD, SR – SCREW REVERSE

PARTS LIST

| ITEM | PART NUMBER | DESCRIPTION | QTY. | REMARKS |
|------|-------------|---------------------------|------|----------------------------------|
| 1 | 38200 | BODY ASSY., 3 7/8" RH | 1 | INCLUDES ITEMS 2, 3, 4 & 19 & 20 |
| 3 | 38206 | WEAR FACE, 3 7/8" | 1 | FACTORY REPLACEABLE |
| 4 | 38207 | ANVIL NUT | 1 | ANTI-SEEZ & TORQUE TO 600FT-LB |
| 5 | 38208 | STRIKER RING, 3 7/8" | 2 | |
| 6 | 41204 | STRIKER | 1 | |
| 7 | 40209 | VALVE RETAINER | 1 | ANTI-SEEZ & TORQUE TO 75FT-LB |
| 8 | 37211 | VALVE RING 3-7/8" | 1 | |
| 9 | 37208 | VALVE, 3-7/8" | 1 | |
| 10 | 40226 | INTERNAL WHIP | 1 | ANTI-SEEZ THREADS |
| 11 | 40205 | REAR ANVIL - 4" | 1 | ANTI-SEEZ & BACK OFF 1/8 TURN |
| 12 | 37206 | TAILCONE | 1 | |
| 13 | 30221 | TAILBOLT | 6 | ANTI-SEEZ & TORQUE TO 35FT-LB |
| 14 | 40227 | SERV. REAR WHIP | 1 | TORQUE TO 60FT-LB |
| 15 | 40214 | PNEUMATIC FITTING | 1 | TORQUE TO 90FT-LB |
| 16 | 30260 | SOCKET, 3/8" 12-POINT | 1 | FOR ITEM 13 - NOT SHOWN |
| 17 | 40259 | HEX KEY, 1/2" LONG ARM | 1 | FOR ITEM 7 - NOT SHOWN |
| 18 | 40357 | SOCKET, FRONT ANVIL NUT | 1 | FOR ITEM 4 - NOT SHOWN |
| 19 | 2114 | DECAL, SMALL TOOL | 1 | NOT SHOWN |
| 20 | 2115 | DECAL, HAMMERHEAD 12" RED | 1 | NOT SHOWN |

924-0028 REV C

4.00" (98 mm) RH SR

HAMMERHEAD®

Thank you for buying and using Genuine HammerHead
Trenchless Equipment, parts and accessories.