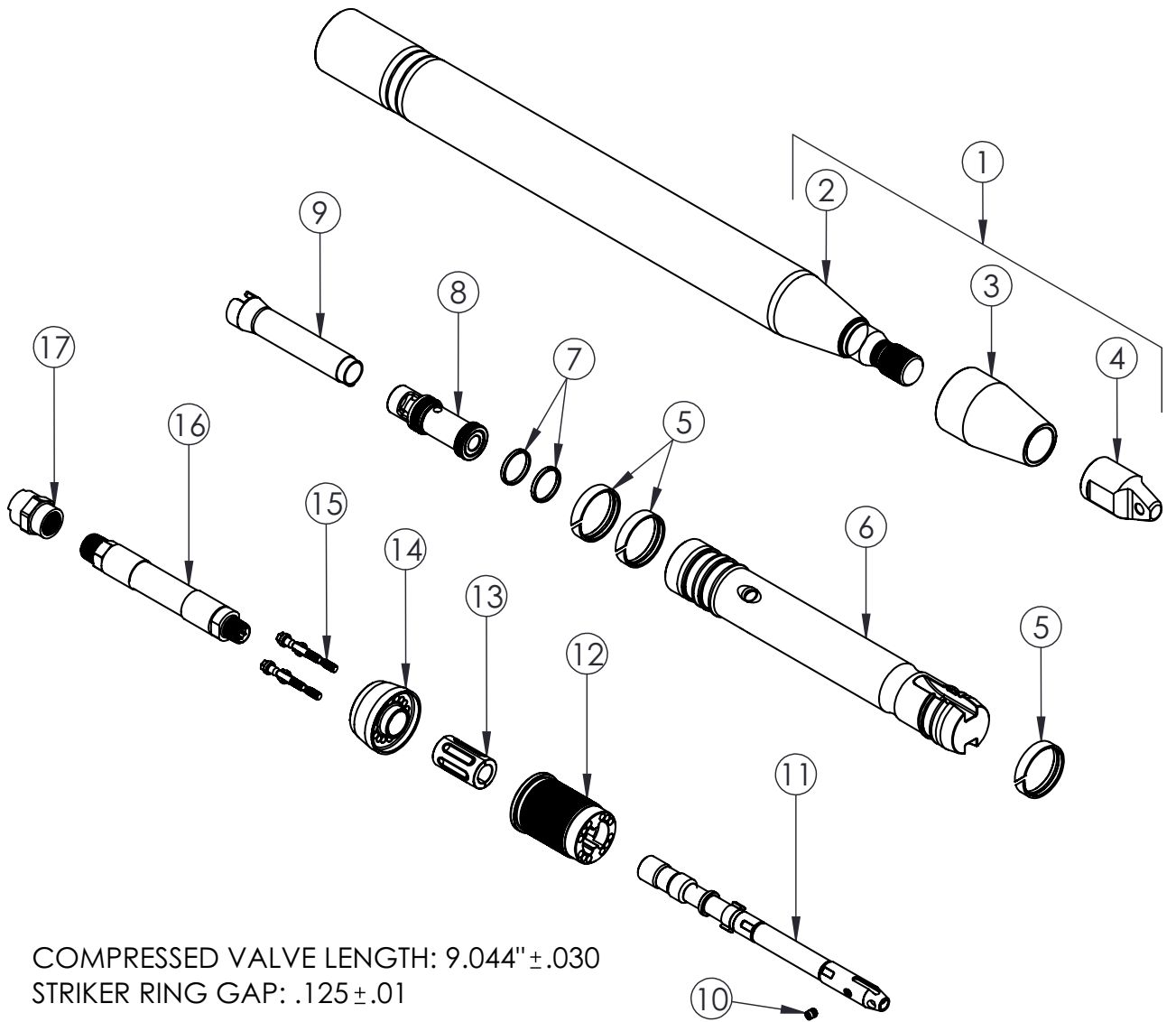


2.50" (67 mm) RH PP SW, PN 26622

RH – REPLACEABLE HEAD, PP – POWER PORT®, SW – SIDEWALKER

EXPLODED VIEW



COMPRESSED VALVE LENGTH: 9.044" ±.030
STRIKER RING GAP: .125 ±.01

2.50" (67 mm) RH PP SW

HAMMERHEAD®

2.50" (67 mm) RH PP SW, PN 26622

RH – REPLACEABLE HEAD, PP – POWER PORT®, SW – SIDEWALKER

PARTS LIST

ITEM	PART NUMBER	DESCRIPTION	QTY.	REMARKS
1	26601	BODY ASSY, 2.5" RH PP SW	1	INCLUDES ITEMS 2, 3, 4 & 21-23
3	25323	REPLACEABLE WEAR FACE	1	ANTI-SEEZ
4	30606	ANVIL NUT	1	ANTI-SEEZ & TORQUE TO 500FT-LB
5	25210	STRIKER RING, 2-1/2"	3	
6	25614	STRIKER, SW	1	
7	25009	VALVE RING REPLACEMENT KIT 2.5"	1	INCLUDES TWO RINGS & COMPRESSOR
8	26613	VALVE REPLACEMENT KIT-2.5" PP SW	1	INCLUDES VALVE, RINGS & COMPRESSOR
9	26604	CONTROL SLEEVE, 2.5" PP DF SW	1	
10	25115	CONTROL STUD	1	ANTI-SEEZ & TORQUE TO 50IN-LB
11	26620	CONTROL STEM, 2.5" PP SW	1	
12	26615	REAR ANVIL, 2.5" PP DF	1	ANTI-SEEZ & HAND TIGHT TO BODY
13	30520	ISOLATOR HALF-2-1/2 & 3" PP	2	ANTI-SEEZ ID
14	25106	TAILCONE, 2-1/2" PP	1	
15	25121	TAILBOLT-9MM HEX	4	ANTI-SEEZ & TORQUE TO 28FT-LB
16	40227	SERV. REAR WHIP	1	TORQUE TO 60FT-LB
17	40214	PNEUMATIC FITTING	1	TORQUE TO 90FT-LB
18	20735	HEX DRIVER - 5/32"	1	FOR ITEM 10 - NOT SHOWN
19	25114	9MM HEX DP WL SOCKET	1	FOR ITEM 15 - NOT SHOWN
20	30567	SOCKET, FRONT ANVIL NUT	1	FOR ITEM 4 - NOT SHOWN
21	2114	DECAL, SMALL TOOL	1	NOT SHOWN
22	2115	DECAL, HAMMERHEAD 12" RED	1	NOT SHOWN
23	923-1877	DECAL, PATENTS	1	NOT SHOWN

924-0054 REV C

2.50" (67 mm) RH PP SW

HAMMERHEAD®

Thank you for buying and using Genuine HammerHead
Trenchless Equipment, parts and accessories.