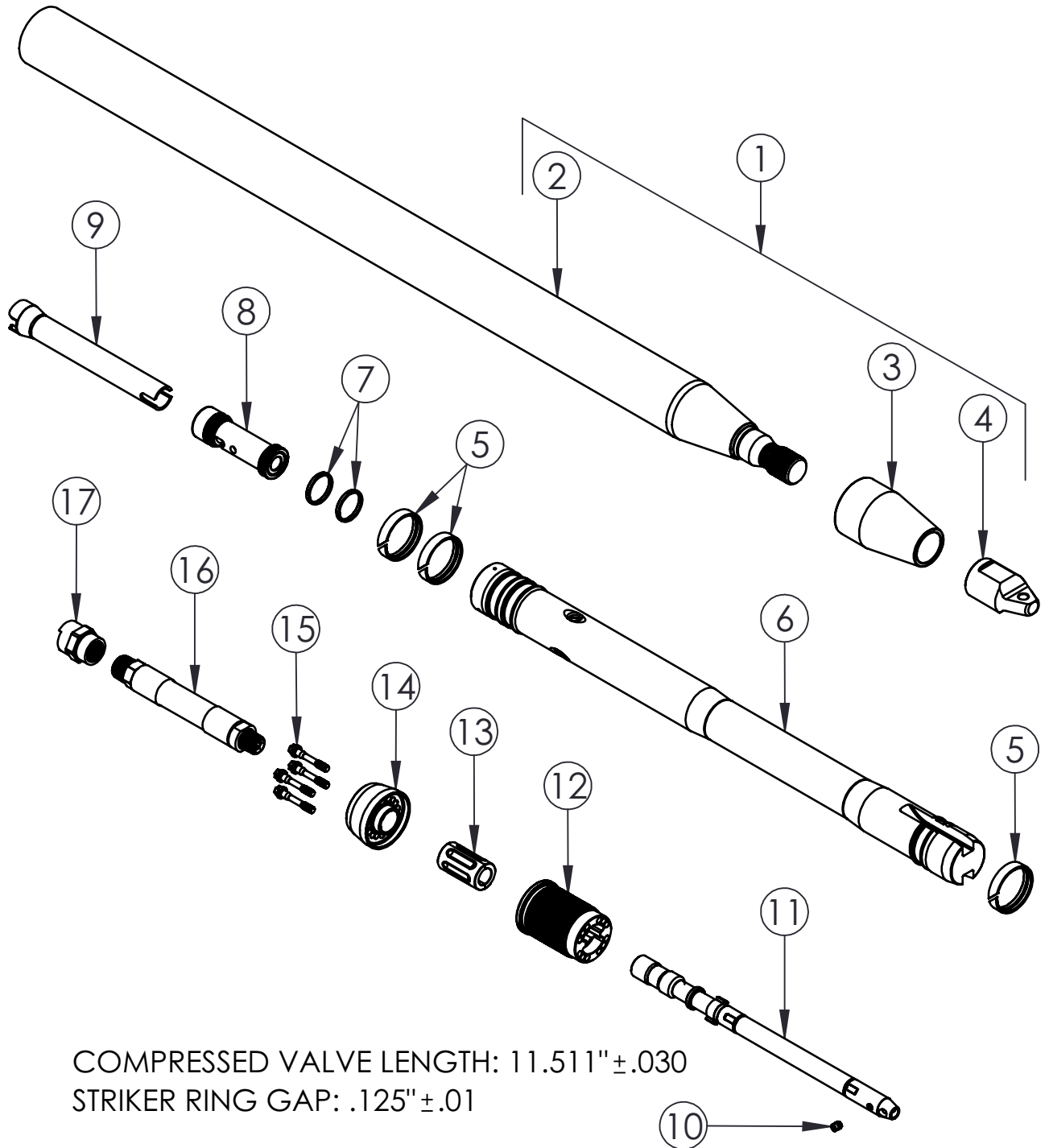


# 2.50" (67 mm) RH PP DF, PN 25522

RH – REPLACEABLE HEAD, PP – POWER PORT, DF – DEBRIS FREE

## EXPLODED VIEW



2.50" (67 mm) RH PP DF

HAMMERHEAD®

For the latest in trenchless equipment and solutions or to find your local authorized dealer, visit our website at [www.hammerheadtrenchless.com](http://www.hammerheadtrenchless.com).

# 2.50" (67 mm) RH PP DF, PN 25522

RH – REPLACEABLE HEAD, PP – POWER PORT, DF – DEBRIS FREE

## PARTS LIST

ITEM	PART NUMBER	DESCRIPTION	QTY.	REMARKS
1	25319	BODY ASSY. - 2 1/2" RH	1	INCLUDES ITEMS 2, 3, 4 & 21-23
3	25323	REPLACEABLE WEAR FACE	1	ANTI-SEEZ
4	30606	ANVIL NUT	1	ANTI-SEEZ&TORQUE TO 500FT-LB S/N 133525 & LR 25321
5	25210	STRIKER RING, 2-1/2"	3	
6	25148	STRIKER-2-1/2 PP	1	
7	25009	VALVE RING REPLACEMENT KIT 2.5"	1	INCLUDES TWO RINGS & COMPRESSOR
8	25007	VALVE REPLACEMENT KIT-2.5"	1	INCLUDES VALVE, RINGS & COMPRESSOR
9	25617	CONTROL SLEEVE, 2.5"PP DF	1	
10	25115	CONTROL STUD	1	ANTI-SEEZ & TORQUE TO 50IN-LB
11	25620	CONTROL STEM, 2.5" PP DF	1	
12	25615	REAR ANVIL, 2.5" PP DF	1	ANTI-SEEZ & HAND TIGHT TO BODY
13	30703	ISOLATOR HALF, 2.5"&3.0" DF	2	ANTI-SEEZ ID
14	25616	TAILCONE, 2.5" PP DF	1	
15	25121	TAILBOLT-9MM HEX	4	ANTI-SEEZ & TORQUE TO 28FT-LB
16	40227	SERV. REAR WHIP	1	TORQUE TO 60FT-LB
17	40214	PNEUMATIC FITTING	1	TORQUE TO 90FT-LB
18	20735	HEX DRIVER - 5/32"	1	FOR ITEM 10 - NOT SHOWN
19	25114	9MM HEX DP WL SOCKET	1	FOR ITEM 15 - NOT SHOWN
20	30567	SOCKET, FRONT ANVIL NUT	1	FOR ITEM 4 - NOT SHOWN
21	2114	DECAL, SMALL TOOL	1	NOT SHOWN
22	2115	DECAL, HAMMERHEAD 12" RED	1	NOT SHOWN
23	923-1877	DECAL, PATENTS	1	NOT SHOWN

924-0010 REV E

2.50" (67 mm) RH PP DF

HAMMERHEAD®

Thank you for buying and using Genuine HammerHead  
Trenchless Equipment, parts and accessories.