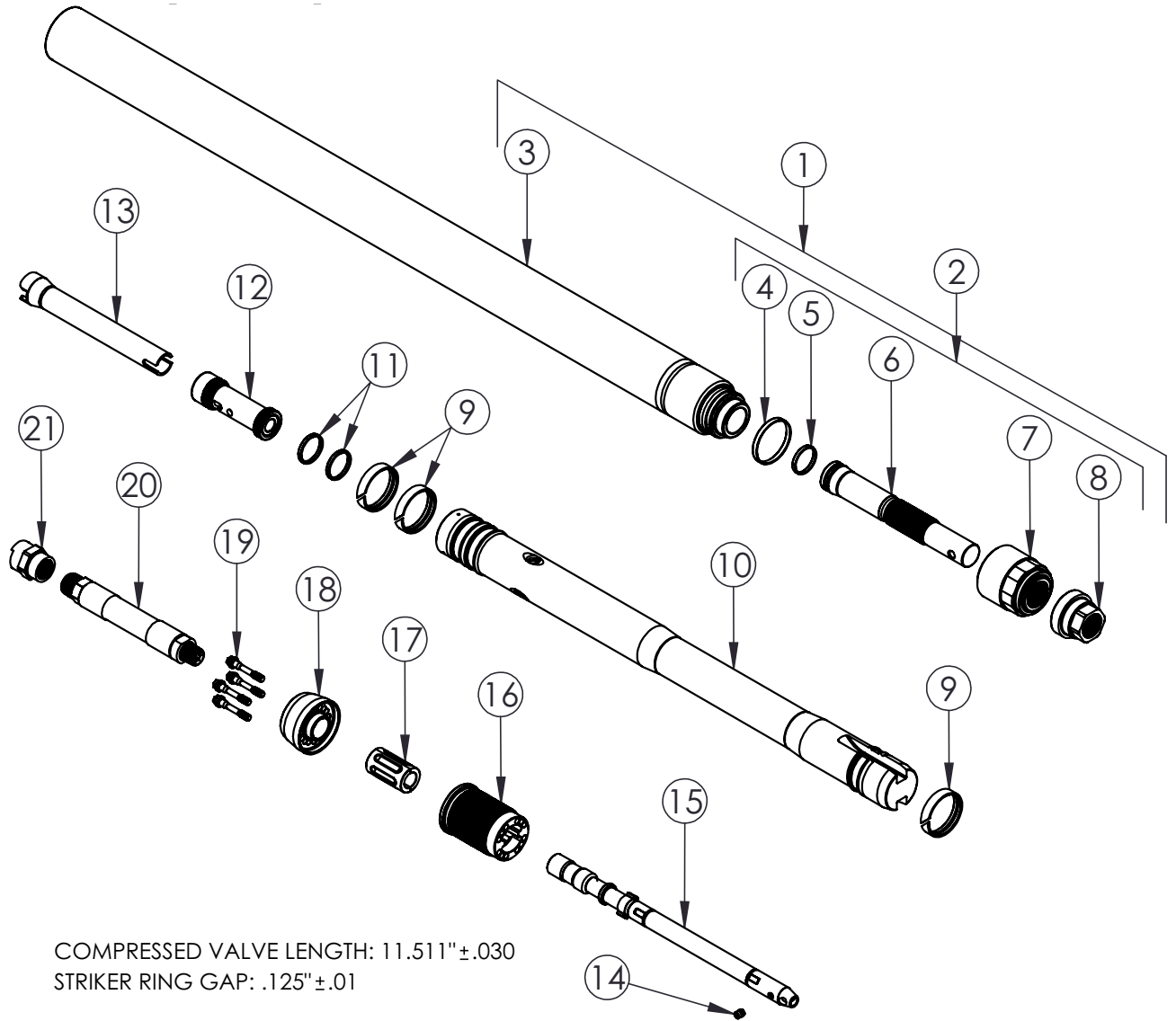


# 2.50" (67 mm) AH PP DF, PN 25922

AH – ACTIVE HEAD, PP – POWER PORT, DF – DEBRIS FREE

## EXPLODED VIEW



COMPRESSED VALVE LENGTH:  $11.511" \pm .030$   
STRIKER RING GAP:  $.125" \pm .01$

# 2.50" (67 mm) AH PP DF, PN 25922

AH – ACTIVE HEAD, PP – POWER PORT, DF – DEBRIS FREE

## PARTS LIST

ITEM	PART NUMBER	DESCRIPTION	QTY.	REMARKS
1	25146	BODY ASSY. 2-1/2 AH	1	INCLUDES ITEMS 3, 4-8 & 25-27
2	25177	HEAD REPLACEMENT KIT, 2-1/2" AH	1	INCLUDES ITEMS 4-8
4	25143	RING, HEAD SEAL 2-1/2" AH	1	
5	25144	RING, BIT SHAFT	1	
6		BIT SHAFT-2-1/2"	1	ANTI-SEEZ
7		HEAD, RR 2-1/2"	1	ANTI-SEEZ & TORQUE TO FRONT HD 600FT-LB
8		HEAD, FR 2-1/2"	1	ANTI-SEEZ & HAND TIGHT TO BIT SHAFT
9	25210	STRIKER RING, 2-1/2"	3	
10	25148	STRIKER-2-1/2 PP	1	
11	25009	VALVE RING REPLACEMENT KIT 2.5"	1	INCLUDES TWO RINGS & COMPRESSOR
12	25007	VALVE REPLACEMENT KIT-2.5"	1	INCLUDES VALVE, RINGS & COMPRESSOR
13	25617	CONTROL SLEEVE, 2.5" PP DF	1	
14	25115	CONTROL STUD	1	ANTI-SEEZ & TORQUE TO 50IN-LB
15	25620	CONTROL STEM, 2.5" PP DF	1	
16	25615	REAR ANVIL, 2.5" PP DF	1	ANTI-SEEZ & HAND TIGHT TO BODY
17	30703	ISOLATOR HALF, 2.5"&3.0" DF	2	ANTI-SEEZ ID
18	25616	TAILCONE, 2.5" PP DF	1	
19	25121	TAILBOLT-9MM HEX	4	ANTI-SEEZ & TORQUE TO 28FT-LB
20	40227	SERV. REAR WHIP	1	TORQUE TO 60FT-LB
21	40214	PNEUMATIC FITTING	1	TORQUE TO 90FT-LB
22	20735	HEX DRIVER - 5/32"	1	FOR ITEM 14 - NOT SHOWN
23	25114	9MM HEX DP WL SOCKET	1	FOR ITEM 19 - NOT SHOWN
24	30448	A.H. AND CTMNT TOOLING	1	FOR ITEMS 7 & 8 - NOT SHOWN
25	2114	DECAL, SMALL TOOL	1	NOT SHOWN
26	2115	DECAL, HAMMERHEAD 12" RED	1	NOT SHOWN
27	923-1877	DECAL, PATENTS	1	NOT SHOWN

924-0012 REV D

2.50" (67 mm) AH PP DF

HAMMERHEAD®

Thank you for buying and using Genuine HammerHead  
Trenchless Equipment, parts and accessories.