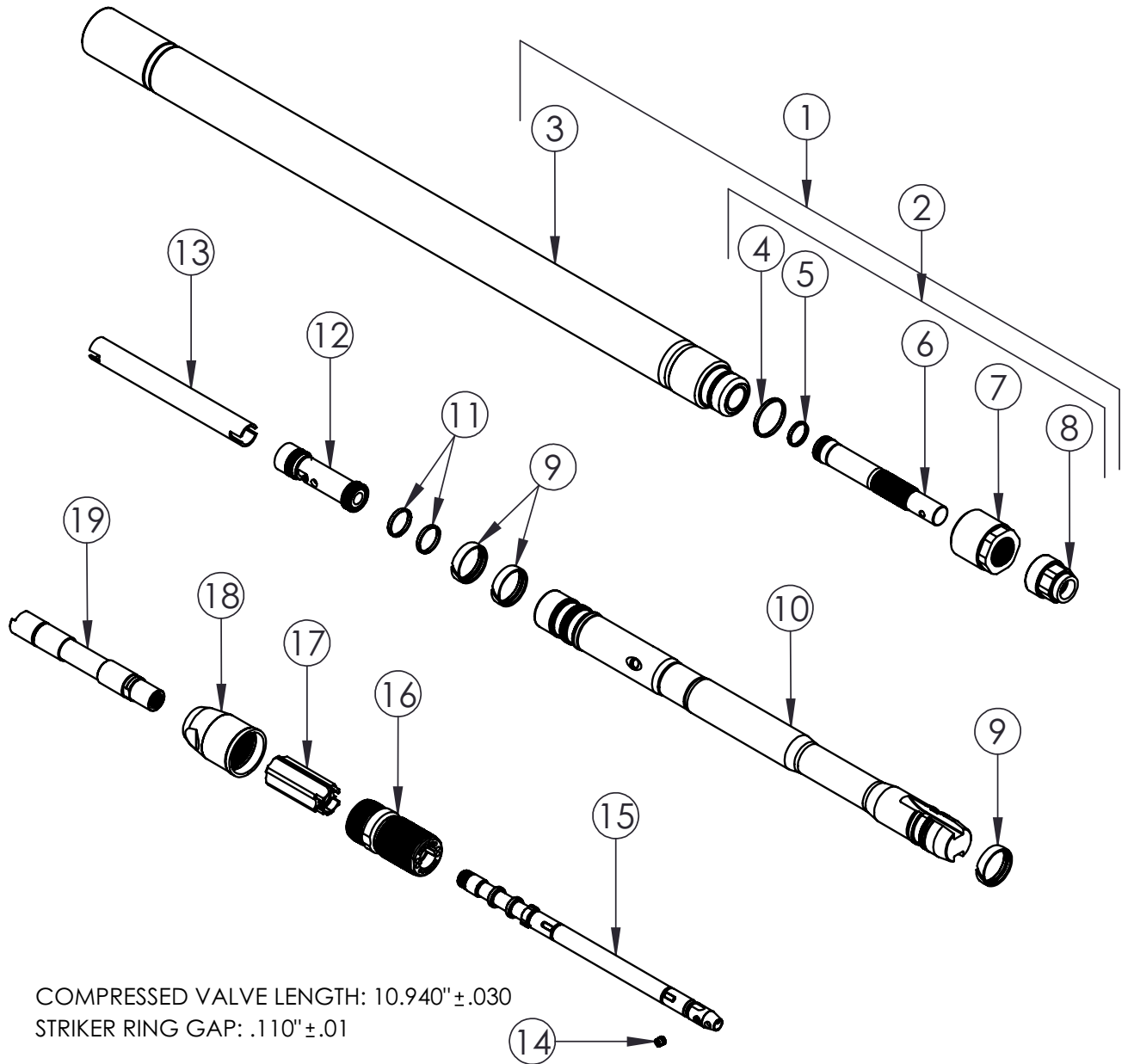


# 2.00" (50 mm) AH PP BL, PN 21722

AH – ACTIVE HEAD, PP – POWER PORT, BL – BOLTLESS

## EXPLODED VIEW



2.00" (50 mm) AH PP BL

HAMMERHEAD®

# 2.00" (50 mm) AH PP BL, PN 21722

AH – ACTIVE HEAD, PP – POWER PORT, BL – BOLTLESS

## PARTS LIST

ITEM	PART NUMBER	DESCRIPTION	QTY.	REMARKS
1	20726	BODY ASSY 2" AH PP	1	INCLUDES ITEMS 3, 4-8 & 24-26
2	20738	HEAD REPLACEMENT KIT 2"AH	1	INCLUDES ITEMS 4-8
4	20712	RING, HEAD SEAL	1	
5	20713	RING, BIT SHAFT	1	
6		BIT SHAFT, 2" AH	1	ANTI-SEEZ
7		REAR HEAD	1	ANTI-SEEZ & TORQUE TO FRONT HD 300FT-LB
8		FRONT HEAD	1	ANTI-SEEZ & HAND TIGHT TO BIT SHAFT
9	20210	STRIKER RING, 2"	3	
10	20704	STRIKER 2" PP	1	
11	21717	VALVE RING REPLACEMENT KIT	1	INCLUDES TWO RINGS & COMPRESSOR
12	21716	VALVE REPLACEMENT KIT	1	INCLUDES VALVE, RINGS & COMPRESSOR
13	20717	CONTROL SLEEVE 2" PP	1	
14	17215	CONTROL STUD	1	ANTI-SEEZ & TORQUE TO 50IN-LB
15	21760	CONTROL STEM, 2.0" PP	1	S/N 135457 & LR 21720
16	21705	REAR ANVIL, 2.0" PP	1	ANTI-SEEZ & HAND TIGHT TO BODY
17	21703	ISOLATOR HALF, 2.0" PP	2	ANTI-SEEZ ID
18	21706	TAILCONE, 2.0" PP	1	ANTI-SEEZ & TORQUE TO 250FT-LB
19	20727	EXTERNAL WHIP	1	TORQUE TO 45FT-LB
20	20735	HEX DRIVER - 5/32"	1	FOR ITEM 14 - NOT SHOWN
21	21721	SOCKET, 1-1/2" WRENCH	1	FOR ITEM 18 - NOT SHOWN
22	21753	SOCKET, REAR ANVIL	1	FOR ITEM 16 - NOT SHOWN
23	30448	A.H. AND CTMNT TOOLING	1	FOR ITEMS 7 & 8 - NOT SHOWN
24	2114	DECAL, SMALL TOOL	1	NOT SHOWN
25	2115	DECAL, HAMMERHEAD 12" RED	1	NOT SHOWN
26	923-1877	DECAL, PATENTS	1	NOT SHOWN

924-0005 REV E

2.00" (50 mm) AH PP BL

HAMMERHEAD®

Thank you for buying and using Genuine HammerHead  
Trenchless Equipment, parts and accessories.