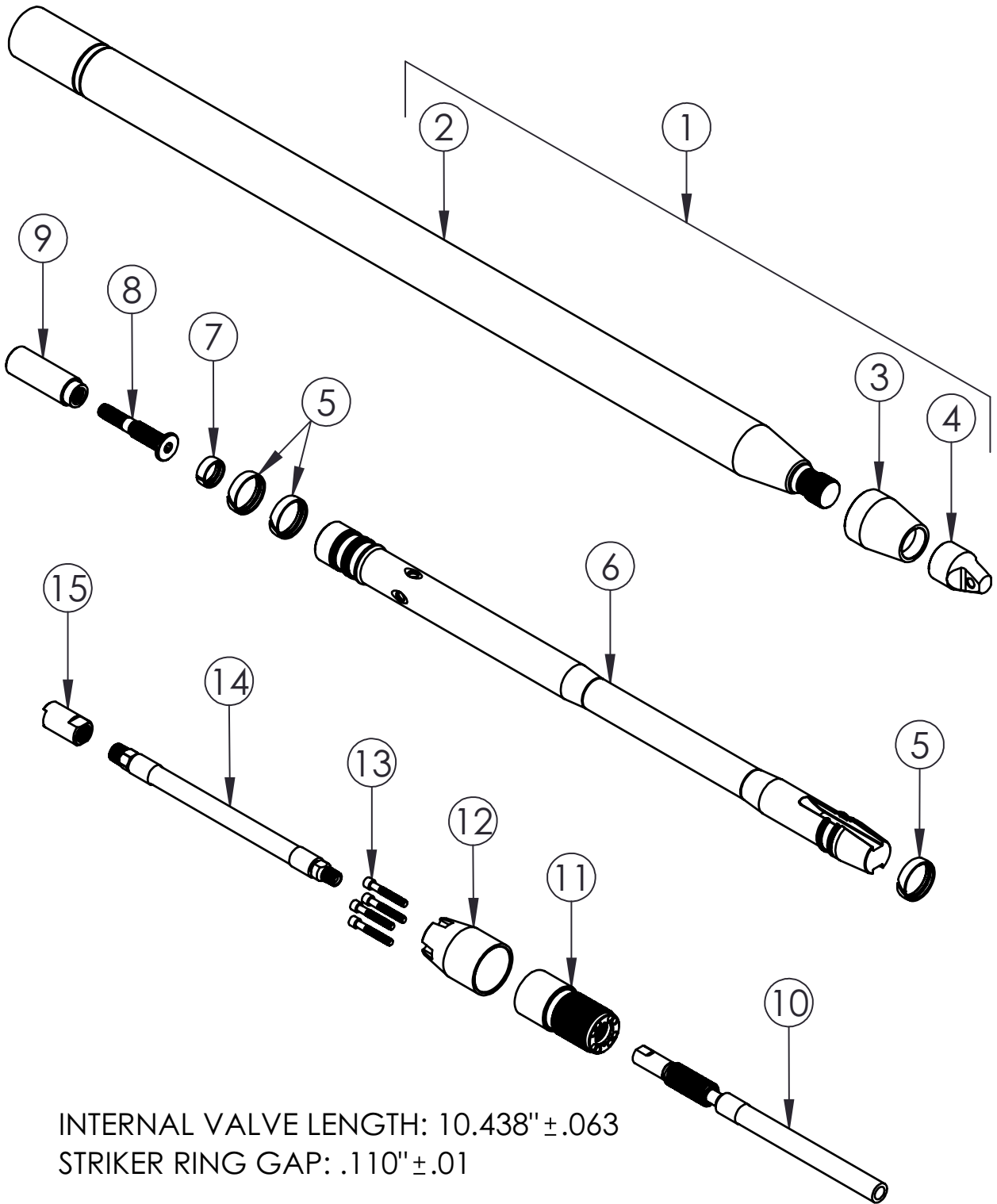


# 2.00" (50 mm) RH SR, PN 20222

RH – REPLACEABLE HEAD, SR – SCREW REVERSE

## EXPLODED VIEW



INTERNAL VALVE LENGTH: 10.438" ±.063

STRIKER RING GAP: .110" ±.01

2.00" (50 mm) RH SR

HAMMERHEAD®

# 2.00" (50 mm) RH SR, PN 20222

RH – REPLACEABLE HEAD, SR – SCREW REVERSE

## PARTS LIST

ITEM	PART NUMBER	DESCRIPTION	QTY.	REMARKS
1	20304	BODY ASSEMBLY-2" RH SR	1	INCLUDES ITEMS 2, 3, 4 & 19 & 20
3	20313	WEAR FACE, 2"	1	ANTI-SEEZ
4	21750	ANVIL NUT	1	ANTI-SEEZ & TORQUE TO 500FT-LB, S/N 134934 & LR 17207
5	20210	STRIKER RING, 2"	3	
6	20214	2" SR STRIKER	1	
7	20211	VALVE RING 2"	1	
8	20209	VALVE RETAINER	1	ANTI-SEEZ & TORQUE TO 20FT-LB
9	20208	VALVE	1	
10	20226	INTERNAL WHIP-2"	1	ANTI-SEEZ THREADS
11	20205	REAR ANVIL	1	ANTI-SEEZ & HAND TIGHT TO BODY
12	20206	TAILCONE	1	
13	20221	TAILBOLT	4	ANTI-SEEZ & TORQUE TO 120IN-LB
14	17227	HOSE WHIP-REAR	1	TORQUE TO 30FT-LB
15	17242	QUICK CONNECT-FEMALE	1	TORQUE TO 45FT-LB
16	21762	SOCKET, 2.0" ANVIL NUT	1	FOR ITEM 4 - NOT SHOWN
17	20260	HEX DRIVER - 3/16"	1	FOR ITEM 13 - NOT SHOWN
18	20259	HEX KEY, 5/16"	1	FOR ITEM 8 - NOT SHOWN
19	2114	DECAL, SMALL TOOL	1	NOT SHOWN
20	2115	DECAL, HAMMERHEAD 12" RED	1	NOT SHOWN

924-0001 REV E

2.00" (50 mm) RH SR

HAMMERHEAD®

Thank you for buying and using Genuine HammerHead  
Trenchless Equipment, parts and accessories.